

Full Fitting



5W / 10W

50,000 HRS L70

80 LM/W

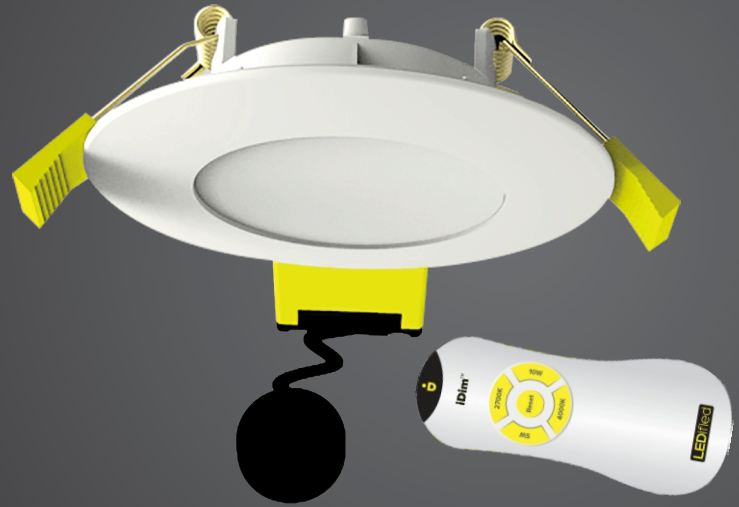
CRI >80



IP20 INDOOR

# LED Downlight EVA

5 / 10W (2700 / 4000K) iDim



EVA is a new generation LED downlight with practicality in mind allowing users to change brightness and whites at the click of a button

## Specifications

Part Number	GEN3DL
Chipset	Nichia (SMD)
Driver	LEDified (External)
Lamp Circuit Power	5 / 10W
Lumens	400 / 800LM
Efficacy	80LM/W
Power Factor	>0.9
Colour Rendering Index	>80
Beam Angle	100°
Dimensions (Cut Out)	101X38MM (70-90MM)
Suitable Working Temperatures	-20°C ~ 40°C
LED Lifetime (L70)	>50,000H

## Suitable Replacements

50W Halogen Downlight	83-91% Energy Savings
35W Halogen Downlight	77-88% Energy Savings
20W Halogen Downlight	62-81% Energy Savings
18W CFL Downlight	57-78% Energy Savings

## Features

- **E for Efficient** - Boasts a minimum of over 80 lumens/watt
- **V for Versatile** - Besides being able to change colours and brightness, it can also be used with most Triac dimmers for conventional dimming controls
- **A for Adaptable** - Whilst it can fit in most standard cut-outs between 70-90mm, you can also customise your EVA with face plate colours and shapes to your liking - Optional
- **Independently control your lighting with the iDim IR Remote Control**
- Uses proprietary **dual layer aluminium slimline metal plate** for heat dissipation which conveniently is its own fitting
- Uses latest **Nichia LM-80 tested chips** with EMC harmonics and immunity testing
- **Minimum LED lifetime of 50,000 hours**

